






## Log Period Antenna

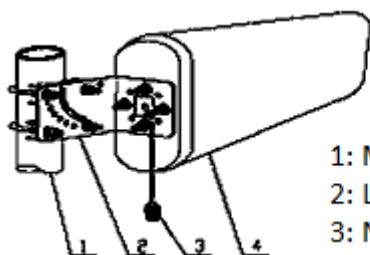
(800-2500MHz, 9dB)

This antenna is a broadband directional narrow-beam antenna, which has log-periodic dipole arrays that are regularly repetitive as a logarithmic function of the excitation frequency.

### Technical parameters

	Part No.	ANT-LP09		
	Frequency	806-960	1710-2500	MHz
	Gain	8	9	dB
	Beam width	H:90/70 V: 60/55		°
	Polarization	Vertical		
	VSWR	1.5		
	Impedance	50		Ω
	Dimension	CTN	335×228×85	mm <sup>3</sup>
		UNIT	320×210×65	
	Weight	G.W.	0.6	g
		N.W.	0.3	
	Power Handling	50		Watt
	Connectors	N Female		
	Installation	Pole Mount		
	Pole diameter	35-50		mm
	Radome material	ABS White		
	Temperature	-40~65		°C
	Humidity	95		%

### Reference information



- 1: Mounted Pole
- 2: L-Type Mounted Bracket
- 3: N Connector

